



Demande d'examen au cas par cas  
Projet d'ombrières photovoltaïques  
3HUB – Abreschviller

ANNEXES

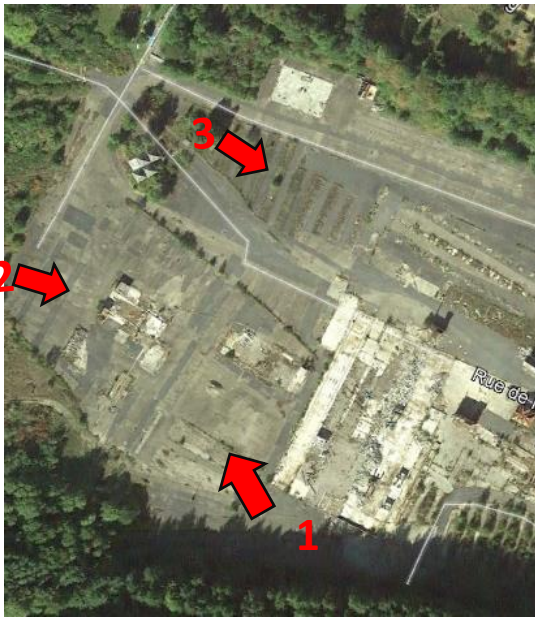
 **URBASOLAR**  
"Solar energy for a green planet"











1



3



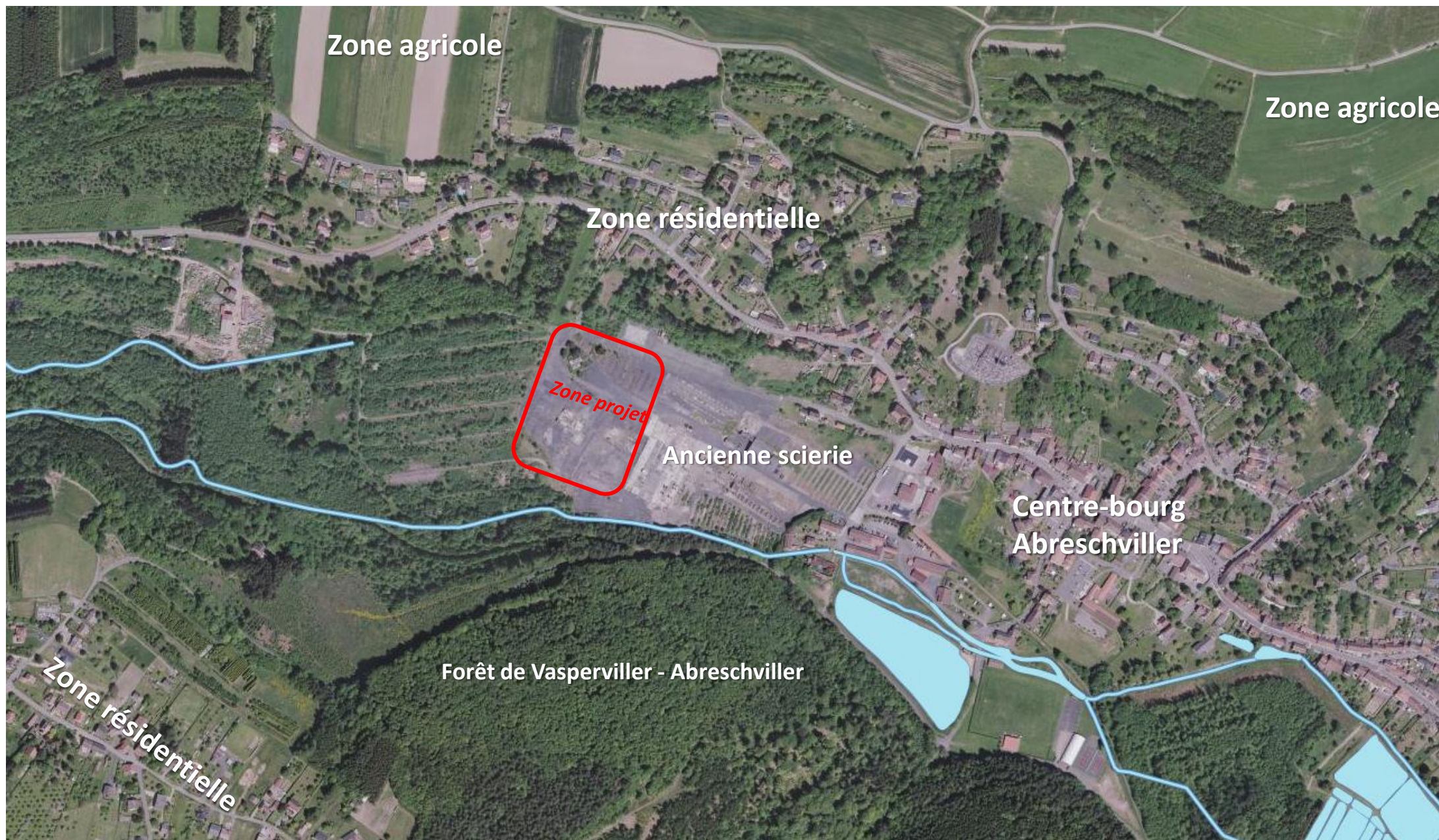
2





Emprise au sol :  $\pm 25300 \text{ m}^2$









**URBASOLAR**  
"Solar energy for a green planet"

