

AIR  
POLLUTION   
EPISODES AND   
THE **CRIT'AIR**  
CERTIFICATE

OCTOBER 2019 VERSION





# Air: a challenge for our quality of life

Air pollution is one of the biggest public health issues of our time. Even though it is invisible, it has a direct impact on our quality of life. It causes almost 50,000 premature deaths every year in France alone, and cuts life expectancy by eight months.

## I ADOPT GOOD PRACTICES EVERY DAY

A pollution peak occurs when an excessive quantity of pollutants is measured in the air we breathe. Each and every one of us can take action to limit air pollution by adopting good practices every day.

- > I avoid taking solo car trips and give preference to active mobility: cycling, walking, public transport, car-pooling, or the train. "Relais - Tram" park and ride car parks are available.
- > For wood-fired heating, I give preference to dry, labelled wood; I maintain and sweep my chimney. If I have an open fire, I can install a wood burning stove.

## SPECIFIC MEASURES TO TACKLE THE CHALLENGE

During a period of pollution, the State and Strasbourg Eurometropolis progressively deploy specific measures at all levels: transport, heating, industry and agriculture.

### DID YOU KNOW?

In France, atmospheric pollution costs 101 billion euros a year. This is twice as much as smoking, which costs 47 billion euros. The cost of harmful health effects caused by the particles alone is between 20 and 30 billion.

Source : commission d'enquête du Sénat.



## WHAT IS THE POLLUTION PEAK PROCEDURE?

### Pollution peak **day 1**

- Clear information is given so that everyone can change their habits:
  - I avoid travelling as far as possible
  - I avoid using my open fireplace, especially if this is an additional heating system.
  - I consider adopting **eco-driving**, not using the air conditioning and reducing my speed.
  - I avoid and **postpone my high-intensity physical and sporting activities** (including competitions)

### Days after

- Speed reduction on **expressways and motorways** (without falling below 70 km/h)
- **Wood-burning heating is banned** unless it is the only form of heating
- Application of the **alternate-day driving scheme from 6 am to 10 pm**

-20 km/h

-20 km/h

The Prefecture is gradually implementing more and more emergency measures—lowering speed limits, special measures for industrial companies, etc. depending on the intensity and duration of the air pollution episode.

Regarding the alternate-day traffic rule, the Bas-Rhin Prefect, after consultation with an expert committee, is to issue a special decree to define the perimeter, date of actual application and emission level requirements for the plan. This decree can be consulted on the Bas-Rhin Prefecture's website.

### DID YOU KNOW?

A **Crit'air level 5 car** emits the same amount of exhaust particles as **33 Crit'air level 1 cars**

Source ATMO Grand Est



=

33 level 1 sticker cars

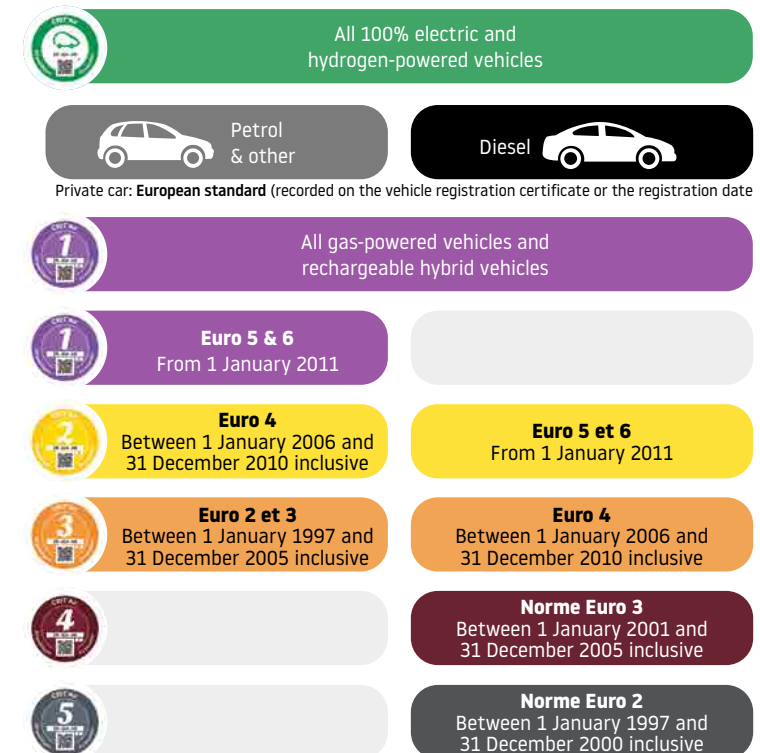


## CRIT'AIR CERTIFICATE: CLEAR ANSWERS TO YOUR DIRECT QUESTIONS

### WHAT IS THIS CERTIFICATE?

The Crit'Air certificate is a **national tool** used in several major French cities (Paris, Lyon, Grenoble, Lille...). There are **six coloured stickers** indicating the **pollution level of your vehicle**, in accordance with its age and engine type.

## THE DIFFERENT AIR QUALITY CERTIFICATE CATEGORIES



### WHAT IS THE POINT OF SUCH A PROCEDURE?

The alternate-day driving scheme is an **emergency mechanism** that allows for a **pollution peak to be attenuated in the areas where the population is most affected**. The health risks are thus reduced, particularly for those most susceptible.

### HOW DO YOU KNOW WHETHER THIS PROCEDURE IS IN FORCE?

To find out about pollution peaks and the implementation of the alternate-day driving scheme, go to [www.strasbourg.eu](http://www.strasbourg.eu) Stay aware, listen to the radio and read the information messages on the motorway information signposts.

### WHO IS AFFECTED?

**All motorized vehicles** (French and/or foreign) **that have to be driven within the Eurometropolis** are affected: motorcycles, trikes, quads, private cars, vans, and trucks, including buses and coaches. Agricultural and construction vehicles are not affected.

### WHERE IS THE ALTERNATE-DAY DRIVING SCHEME APPLIED?

The alternate-day driving scheme is **applied in all the 33 towns comprising the Eurometropolis**. To ensure the road network operates smoothly, detours around the conurbation are authorised on a few sections of the motorway, to the north and to the south. See the detailed map on: [www.strasbourg.eu](http://www.strasbourg.eu)

### HOW DO I GET A CRIT'AIR CERTIFICATE?

It's very simple to obtain the certificate:

- Have your registration document handy, and make the request on: [www.certificat-air.gouv.fr](http://www.certificat-air.gouv.fr)
- If you do not have internet access, call the freephone number: **0800 97 00 33**, from Monday to Friday, from 09:00 to 17:00.
- **The purchase price is €4.21** (including production and postage costs). The sticker is sent by post to the address shown on your registration certificate.



### WHO CAN DRIVE DURING A POLLUTION PEAK?

Only vehicles bearing "**Crit'Air**" certificate levels **0, 1 and 2** may travel. Depending on the local situation and pollution levels recorded, the restriction may be heightened and adapted.

### WHO CANNOT DRIVE DURING POLLUTION PEAK?

Vehicles bearing a **Crit'air certificate level 3, 4 and 5, and vehicles without a certificate**. Failure to comply with this measure may be **punished by a category 3 fine** (€68 or €45 when reduced) or **category 4 fine** (€135 or €90 when reduced).



**AND VEHICLES WITHOUT A CERTIFICATE**

### WHAT SHOULD YOU DO IF YOUR MAIN VEHICLE DOES NOT HAVE A CERTIFICATE OR HAS A LEVEL 4 OR 5 CERTIFICATE?

If you cannot postpone your journey, here are a few tips for travelling in a different fashion:

- > Opt for **public transport**. The Euro-metropolis has 6 tram lines, 36 bus routes, and 6,500 Vélib' bicycles available, with or without a subscription at 20 stations and 5 stores, and 14 train stations.
- > For a journey that is friendlier, more economical and more ecological, consider **car-pooling** or a **car club!** There are several mechanisms for this, such as Citiz or Yeal. You can also make use of the **vehicle hire** offer.
- > If you intend to replace your vehicle in favour of a **«cleaner» vehicle**, and you are tax-domiciled in France, the French State may provide financial support. Consult the ministry website: [www.ecologie-solidaire.gouv.fr](http://www.ecologie-solidaire.gouv.fr)

### ARE THERE ANY EXEMPTIONS?

Restrictions do not apply to the following vehicles:

- > Emergency vehicles (art. R.311-1 of the French highway code)
- > Health/pharmacy professional vehicles (in service)
- > Emergency intervention (public service operations)
- > Winter service vehicles (in service)
- > Shift worker vehicles (public transport staff)
- > For disabled persons (GIG/GIC status)
- > Refuse collection vehicles
- > Vehicle breakdown vehicles (in service)
- > For the transportation of animals, perishable waste, hydrocarbons, cash or funeral vehicles
- > Not in categories L, M and N (art. R.311-1 of the French highway code)

**Important: Vehicles and users benefiting from exemptions are still required to display an air quality certificate.**



The Crit'Air certificate will also be used for the Low Emission Zone to be operated in the City and Eurometropolis of Strasbourg. More information about the planned roll-out and vehicles authorised in the zone can be found at [www.strasbourg.eu/zone-faibles-emissions](http://www.strasbourg.eu/zone-faibles-emissions)

### For more information:

Call: **0800 97 00 33** (Freefone No. from France)

Go to: [www.strasbourg.eu](http://www.strasbourg.eu)

and download the **StrasMap** application



[www.grand-est.developpement-durable.gouv.fr](http://www.grand-est.developpement-durable.gouv.fr)



.....  
Eurométropole de Strasbourg  
1 parc de l'Étoile  
67 076 Strasbourg Cedex - France  
T. 03 68 98 50 00  
courrier@strasbourg.eu  
.....  
[www.strasbourg.eu](http://www.strasbourg.eu)