

**ESPON**

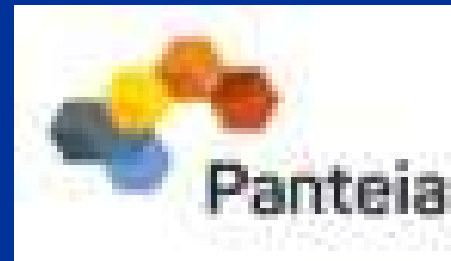


Co-funded by  
the European Union  
Interreg

# Strengthening Our Joint Position in the Newly Merged NSRM Corridor

**Arnaud BURGESS**

The project team



1-12-2025

1

# Introduction to the study



# Policy Rethink: Enhanced Planning and Governance for North Sea-Rhine Mediterranean Corridor (the PREPARED project)

ESPON  Co-funded by the European Union  
Interreg



## [PREPARED] Enhanced Planning and Governance for North Sea-Rhine-Mediterranean Corridor

Governance of New Geographies · Projects

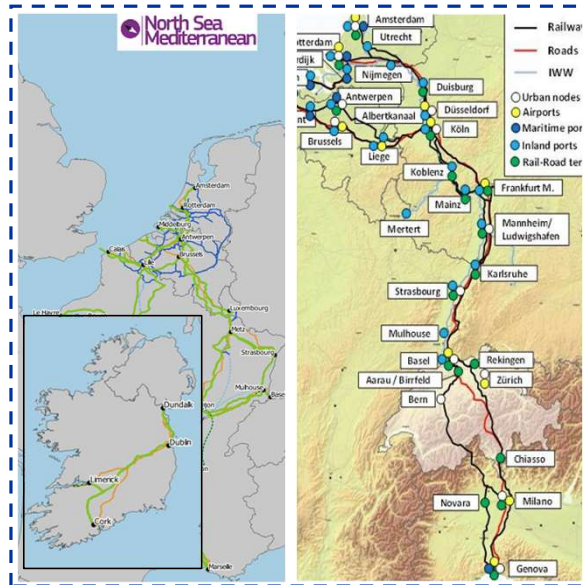
facilitating connections within the NSRM corridor

Lifetime  
March 2025 - March 2026

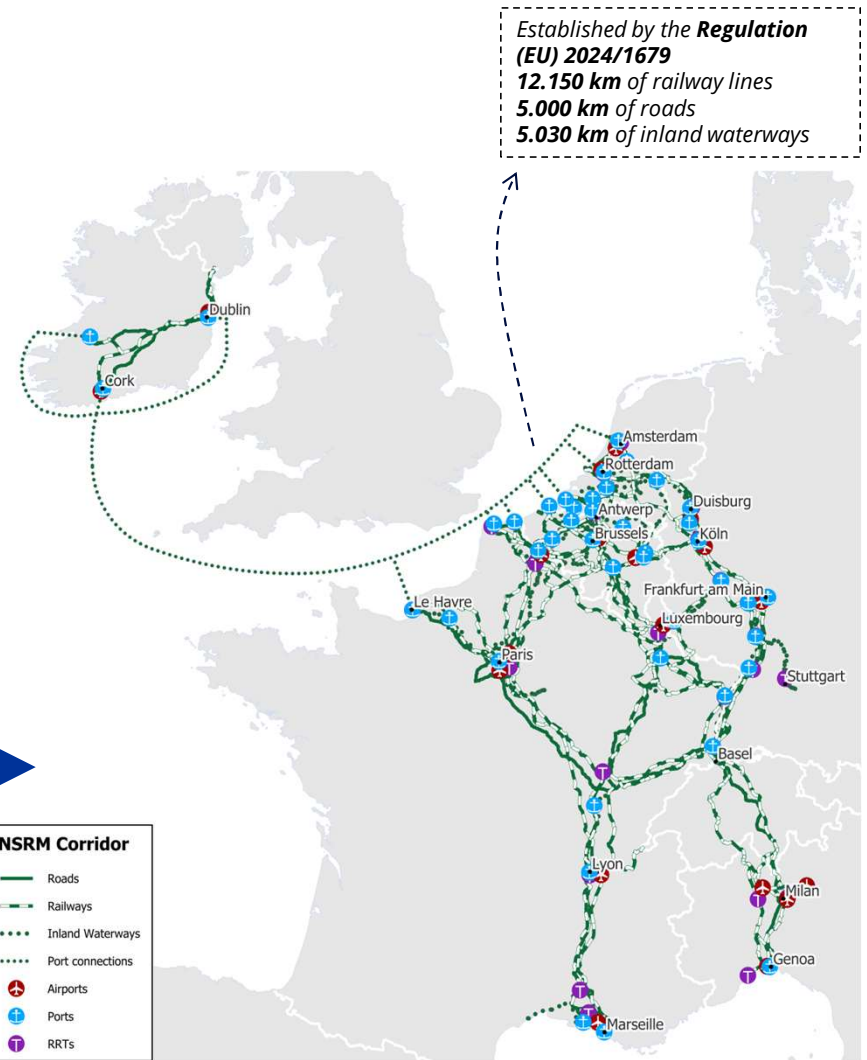


# Project background

The NSRM is the result of the **merger** of the former **North-Sea-Mediterranean (NSMED)** and **Rhine Alpine (RALP)** corridors



RALP and NSMED



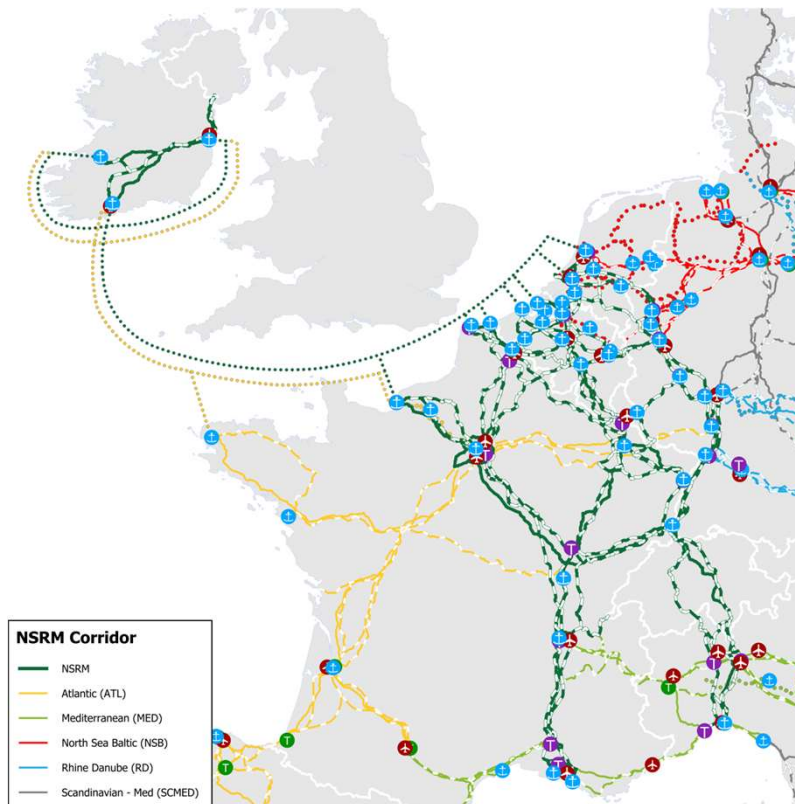
NSRM

Established by the **Regulation (EU) 2024/1679**  
**12.150 km** of railway lines  
**5.000 km** of roads  
**5.030 km** of inland waterways



# Project background

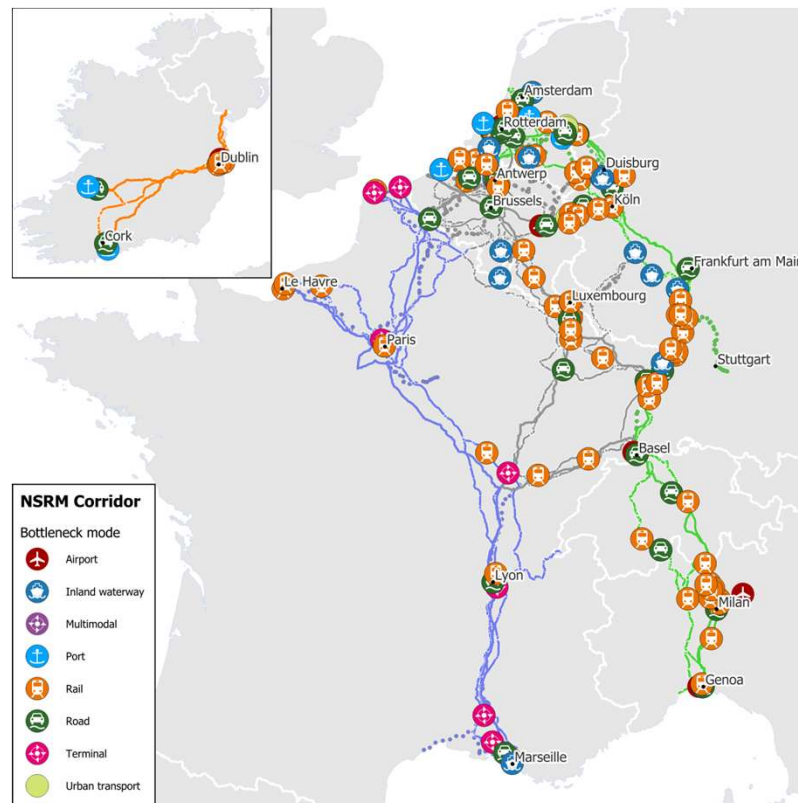
The NSRM plays a **key role** in EU's transport network.



# Project background

Despite achievements, **capacity constraints, operational barriers, governance and cross-border connectivity** issues remain.

**Opportunities** exist for integrated development and governance.



*Bottlenecks*

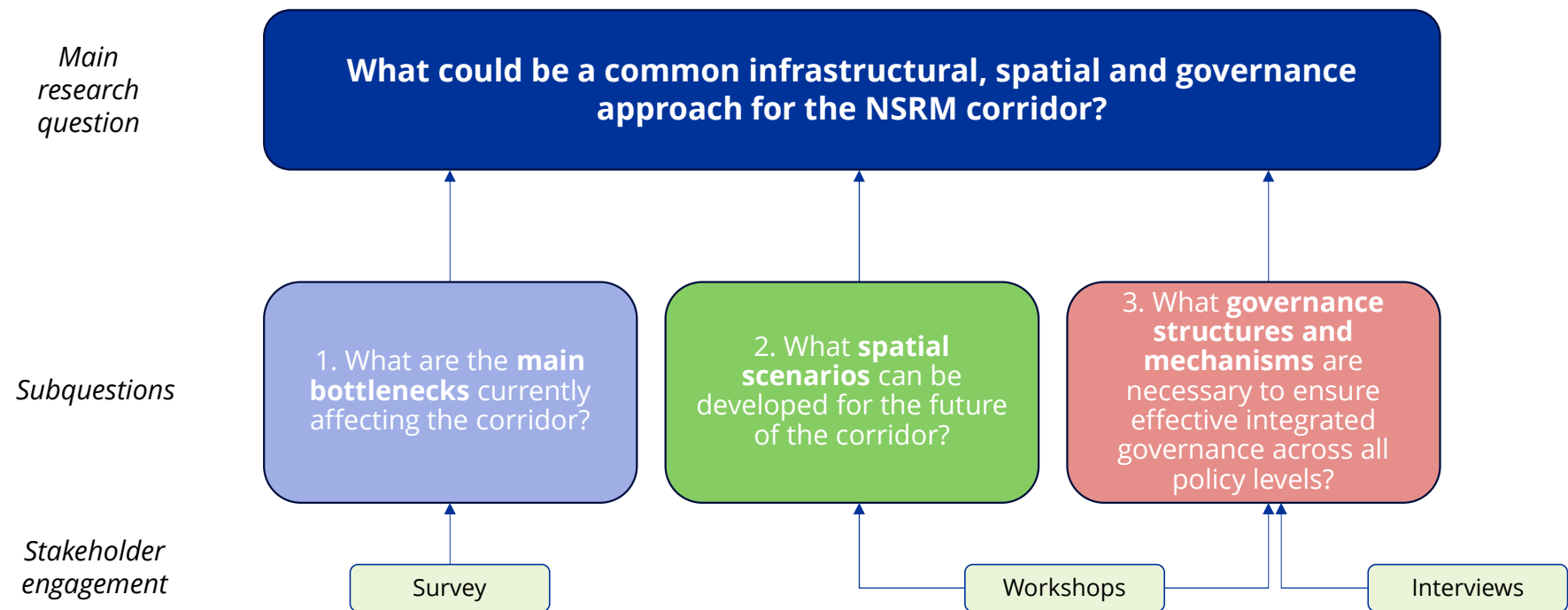
# Project background

**Applied research project (targeted analysis), looking at the impacts of the merger on infrastructure and governance, with special attention to stakeholder needs.**

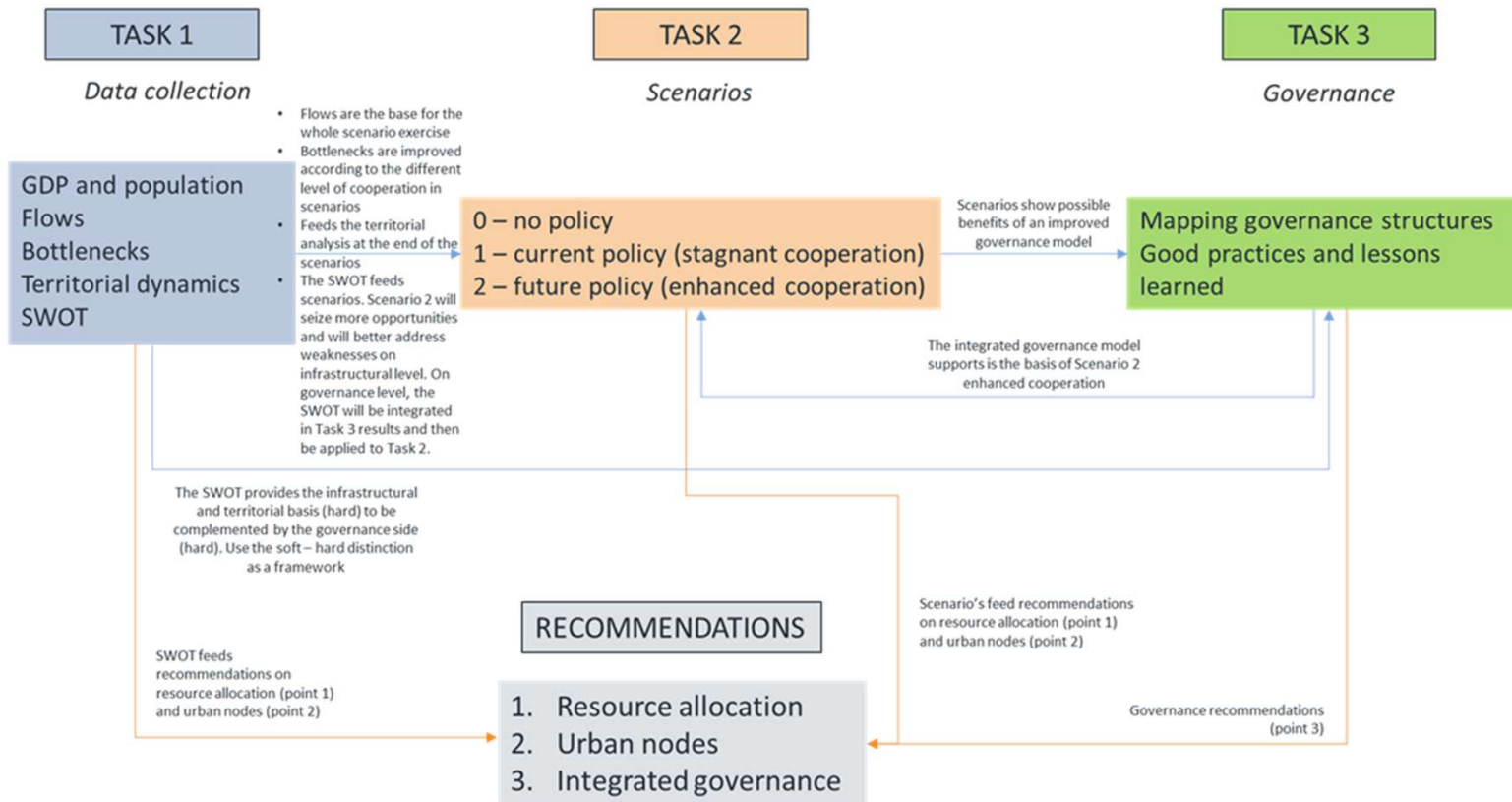
- **Direct client:** ESPON – European Observation Network for Territorial Development and Cohesion (co-funded by Interreg)
- **Lead stakeholder:** Interregional Alliance for the Rhine Alpine Corridor EGTC
- Stakeholder consortium:
  - Rhine-Rhône high speed line association - Rhine-Rhône HSL
  - METREX Network for European Metropolitan Regions and Areas
  - A.L.S.E.A. Lombard Freight Forwarders and Haulers Association
  - Metropolitan City of Milan – MCM

Project not directly related to the work done by the European Coordinator (DG MOVE Corridor Studies), although with indirect impact via research findings and interaction with corridor stakeholders

# Research questions



# Linkages between Tasks: study logic



# 2

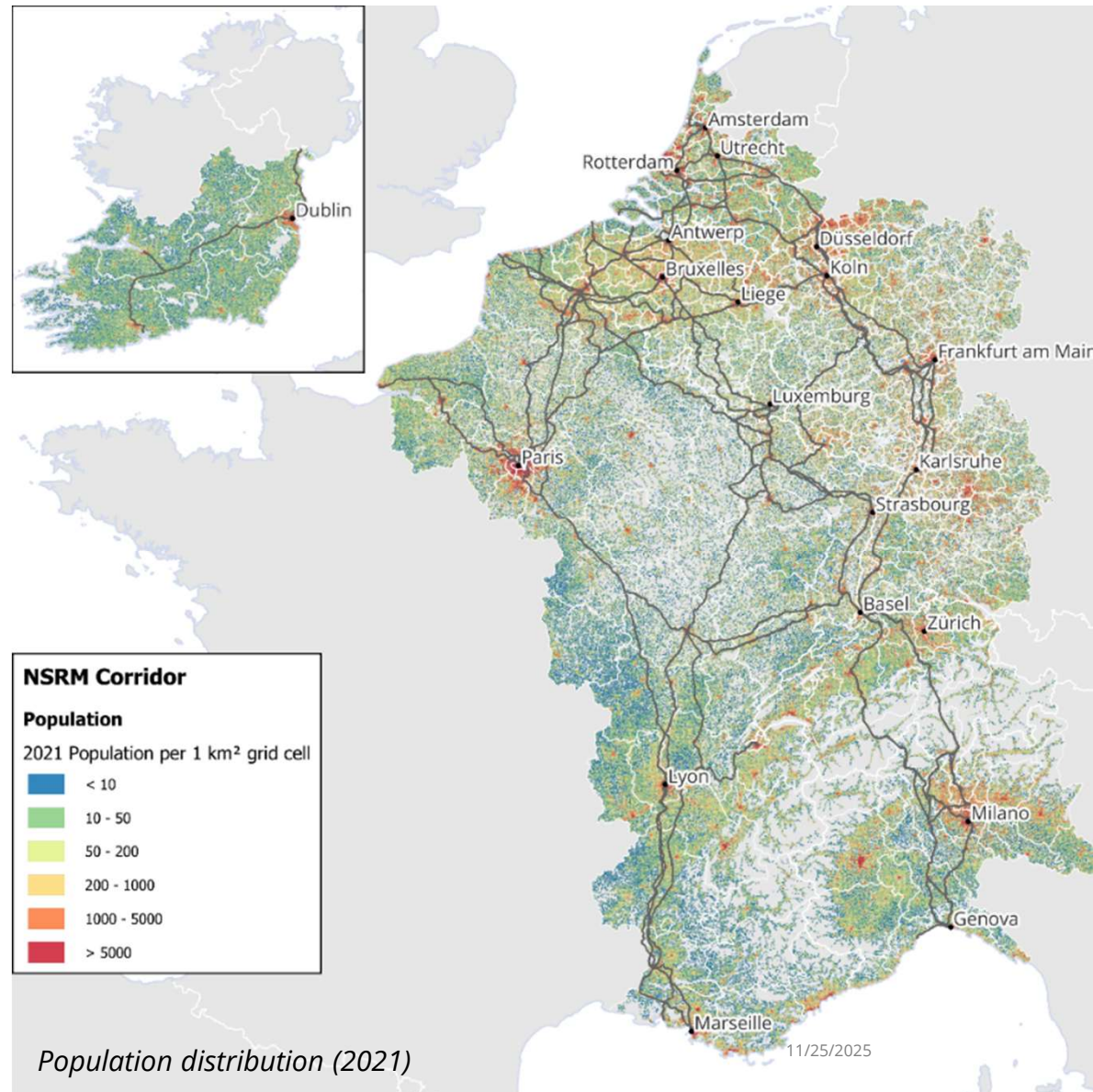
## Corridor analysis: challenges and cooperation



# Key indicators and trends

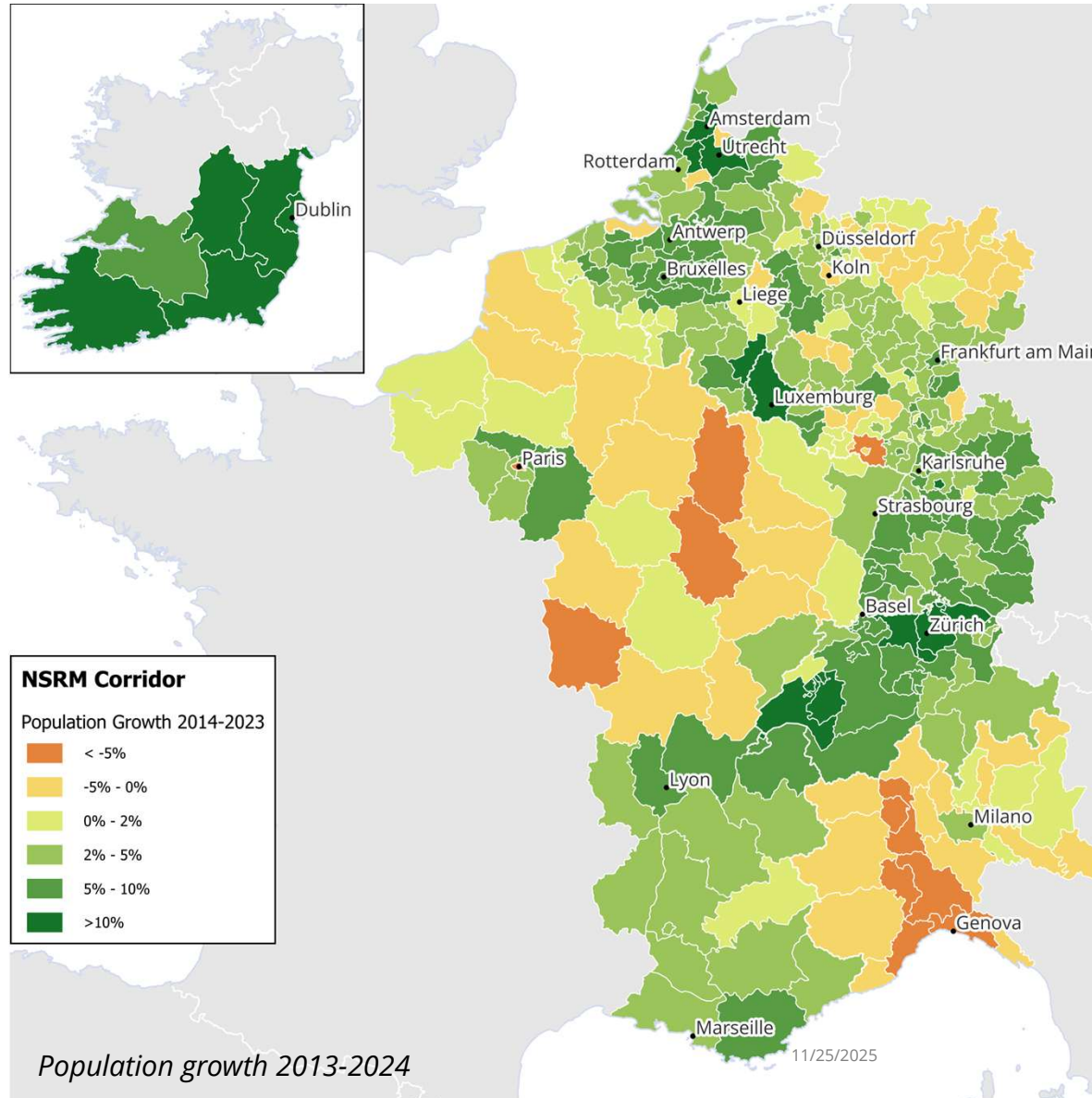
## Population (1 Jan 2024)

- 132,916,320 (29.6 % of the total EU population)



# Key indicators and trends

Population growth (2013 - 2024)

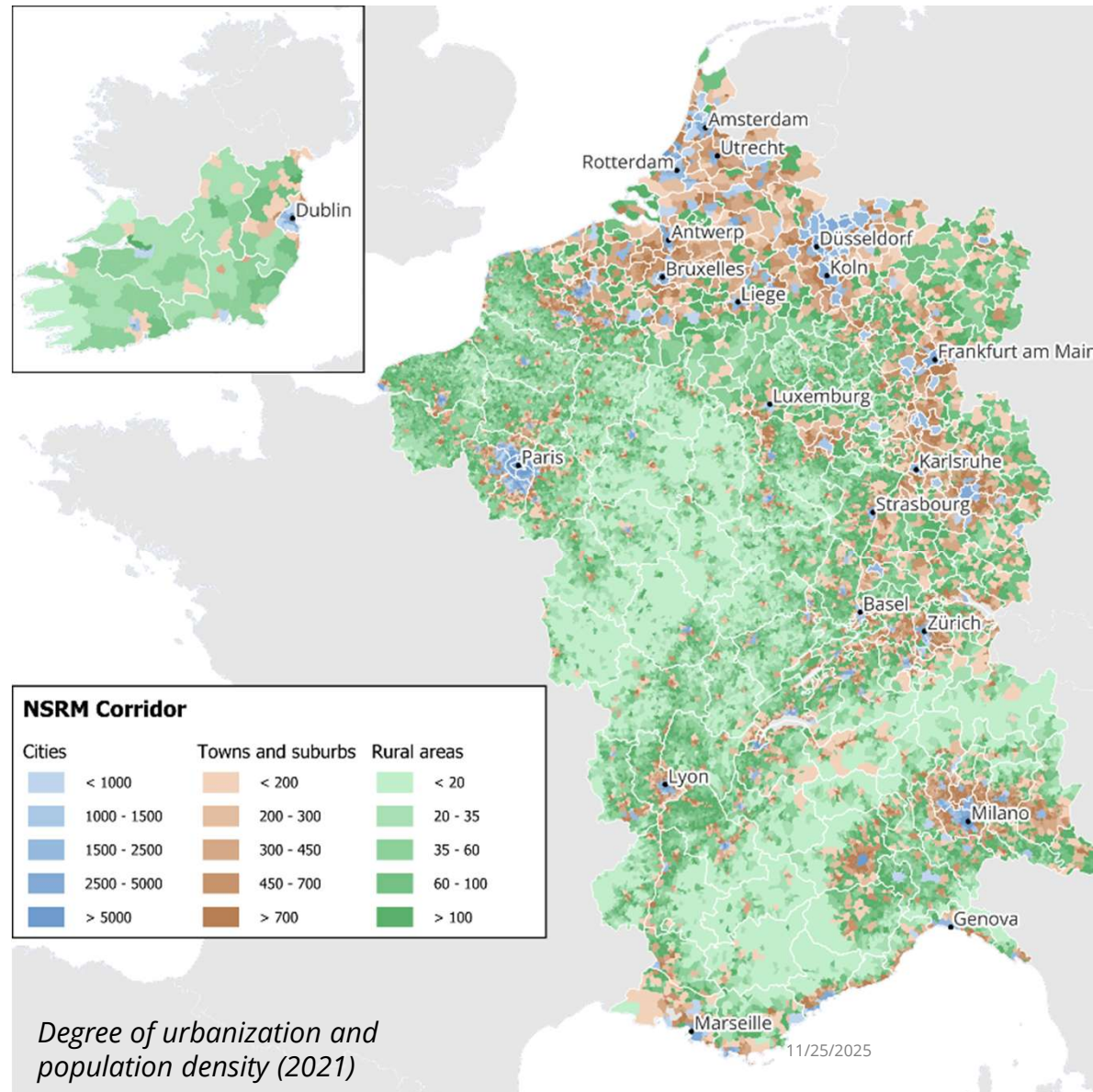


NSRM NUTS 3 Regions

# Key indicators and trends

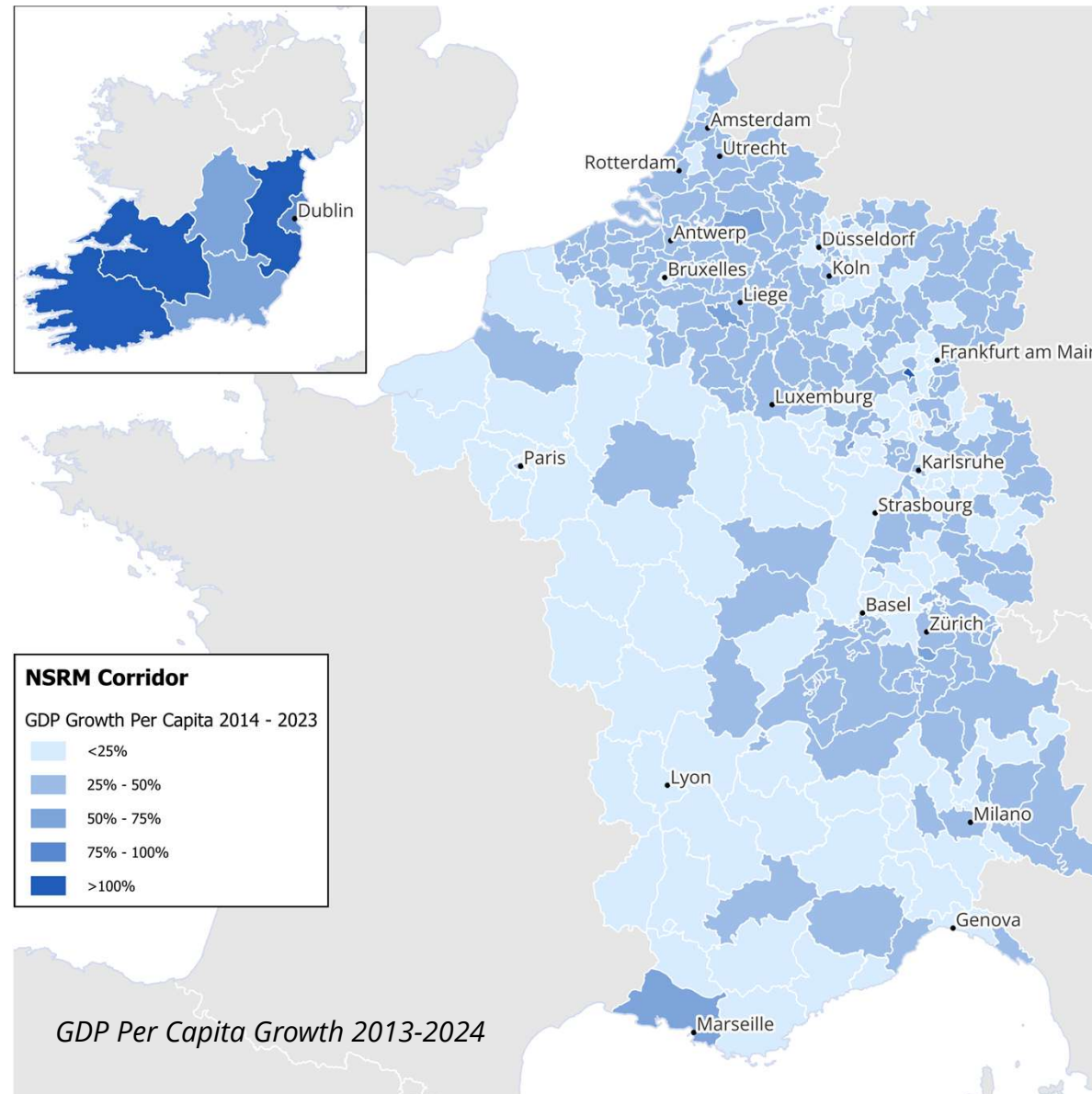
## Urbanization (2021)

- 132,916,320 (29.6 % of the total EU population)



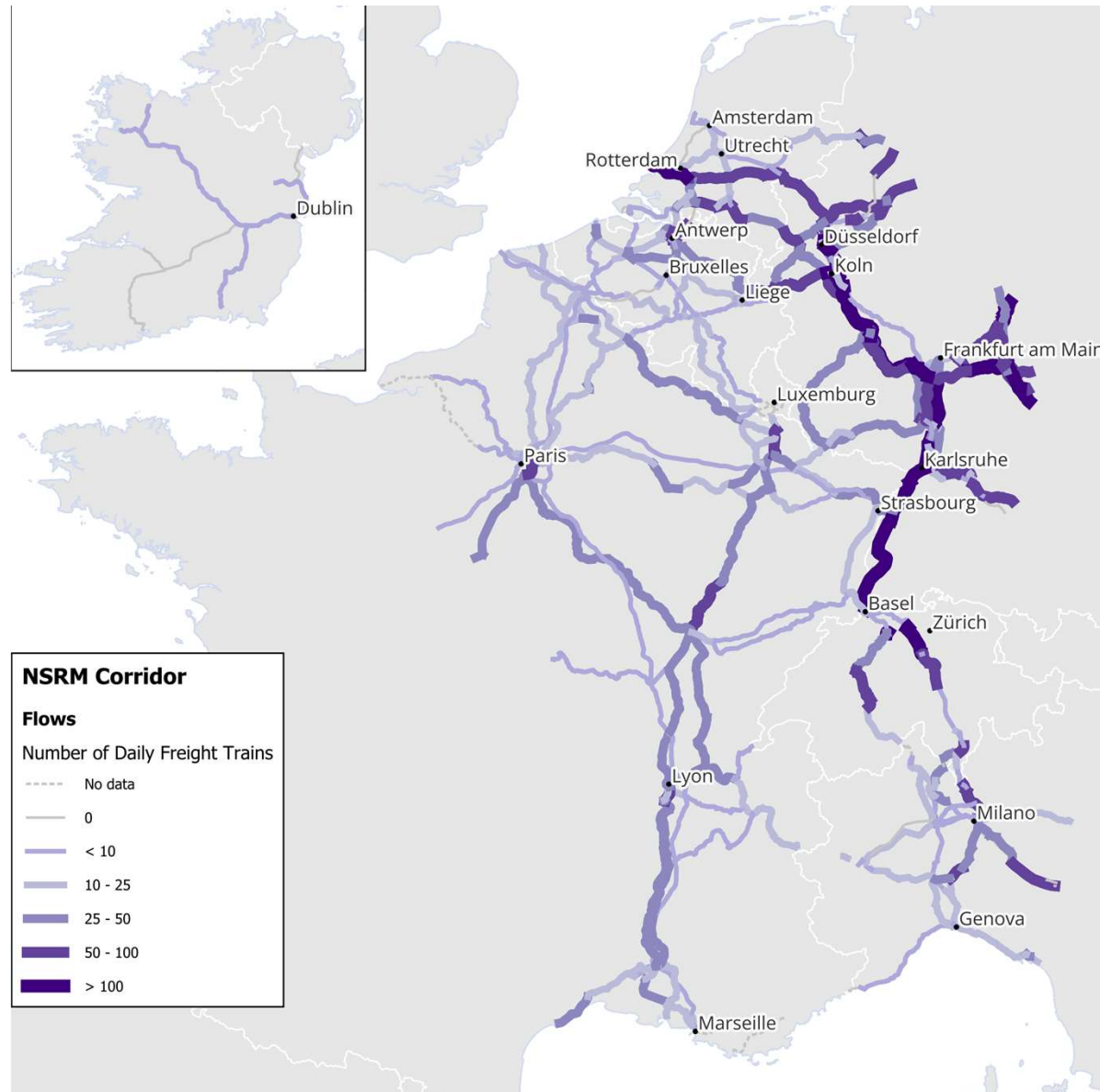
# Key indicators and trends

**GDP growth per capita  
(2013-2024)**



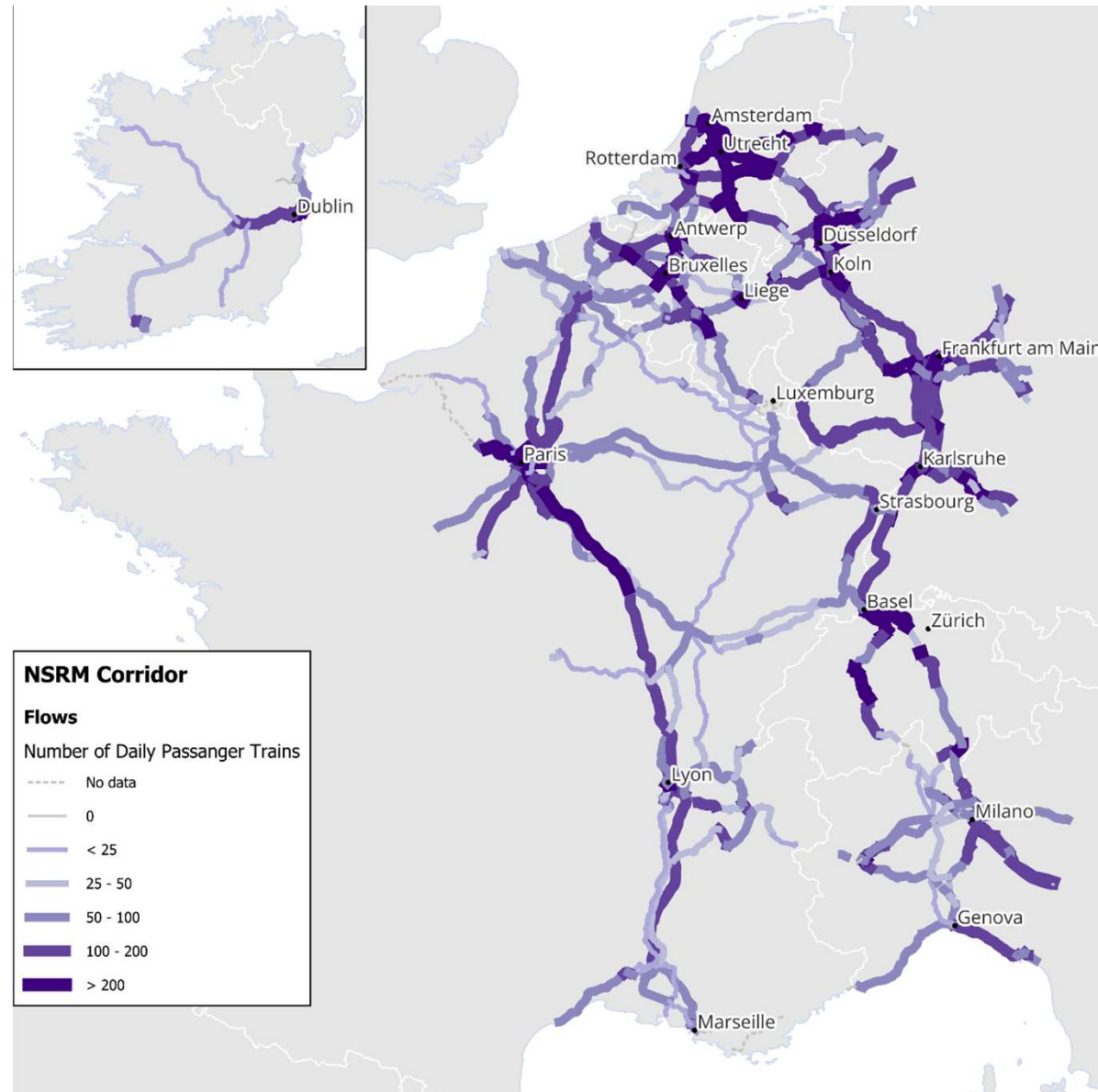
# Key indicators and trends

## Mobility: *Railway Freight Flows*



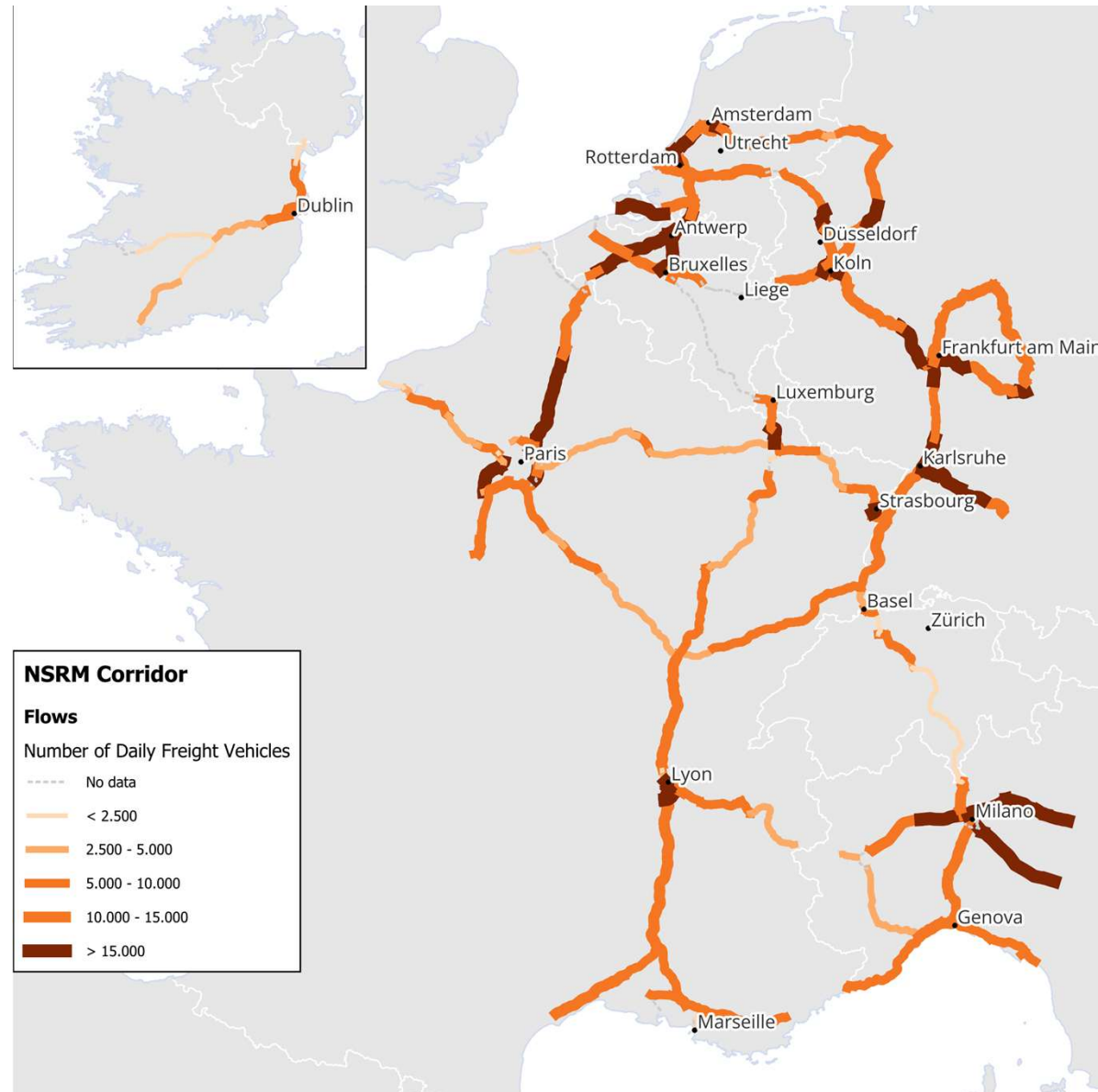
# Key indicators and trends

## Mobility: *Railway Passenger Flows*



# Key indicators and trends

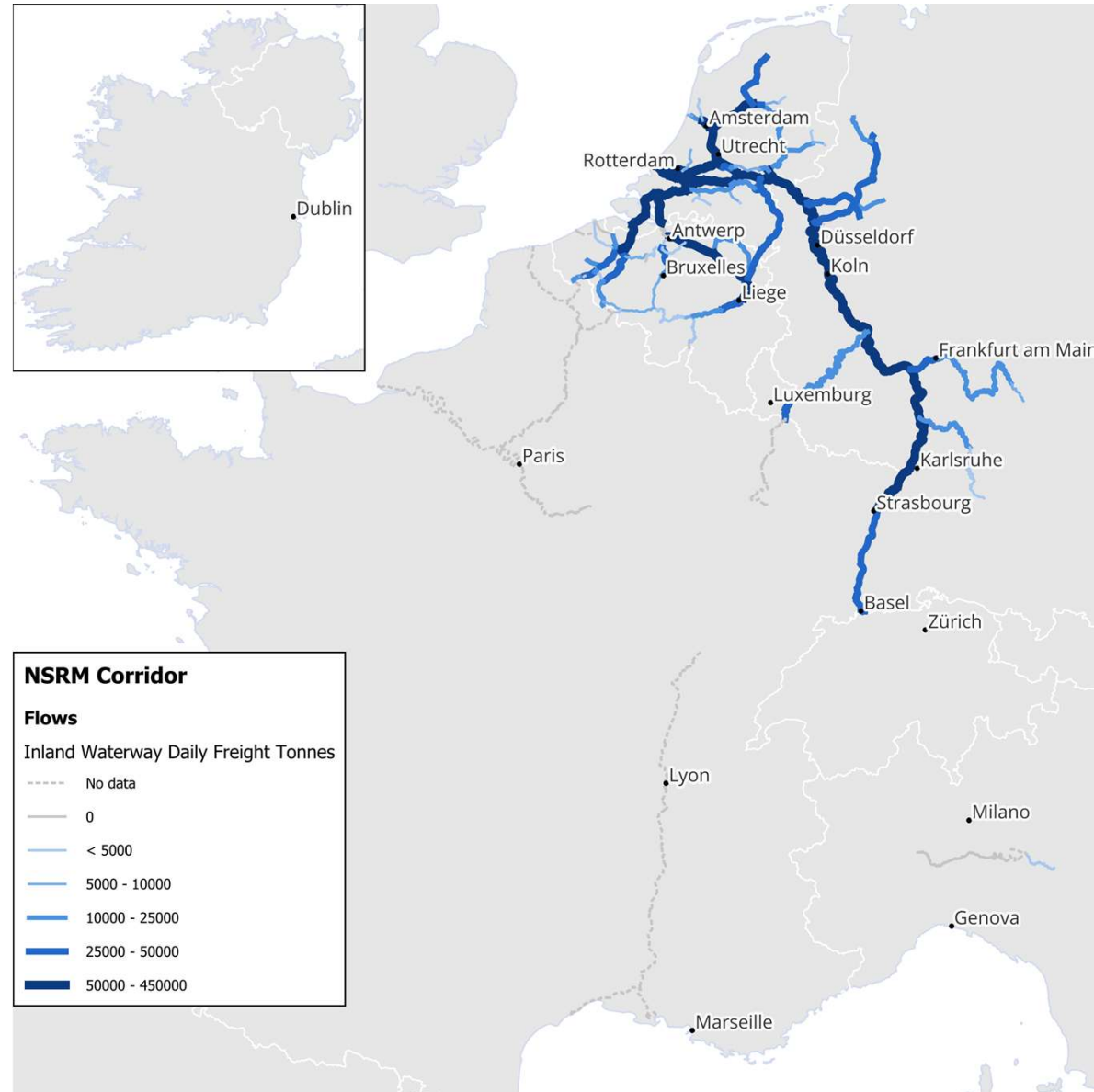
## Mobility: *Road Freight Flows*



# Key indicators and trends

## Mobility:

### *Inland Waterways Freight Flows*



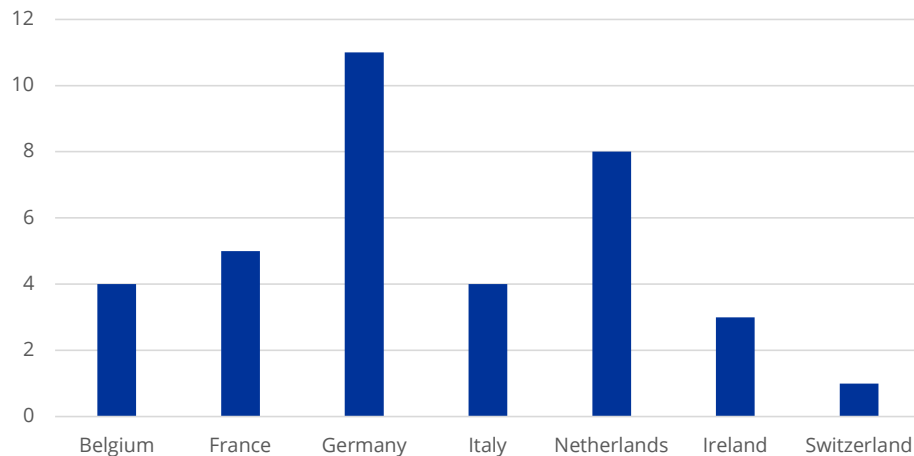
*Subquestion*

1. What are the **main bottlenecks** currently affecting the corridor?

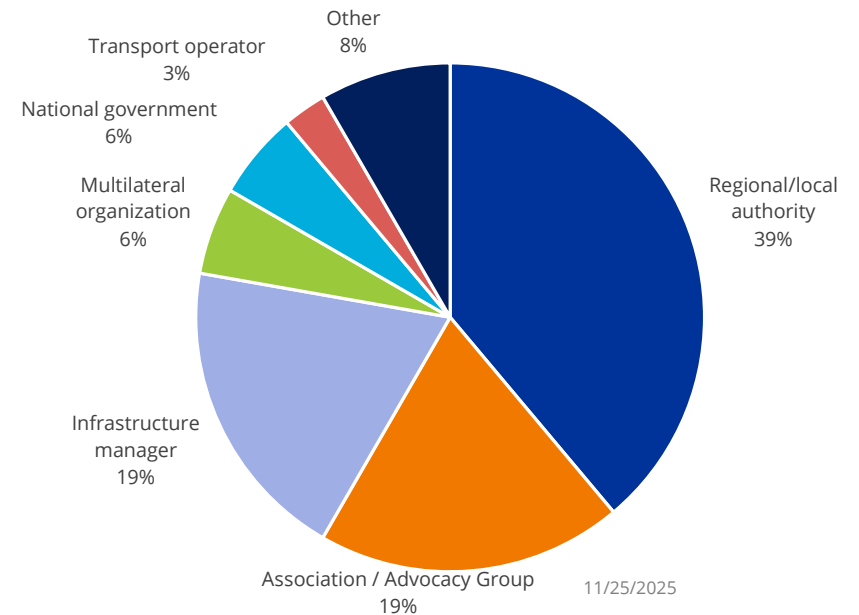
# Survey results

- Total responses = 36 (8 from the Netherlands)
- Diverse **MMO** terms of countries and types of organisations
- Number of bottlenecks = 90 (27 in the Netherlands)

Survey participants by Country



Survey Participants by Organisation type



**MM0** @Marcelo update

Matias, Marcelo; 2025-10-13T15:43:35.376

*Subquestion*

1. What are the **main bottlenecks** currently affecting the corridor?

# General challenges

MM0

- Insufficient infrastructure capacity
- Technical and regulatory fragmentation
- Underdeveloped multimodal and nodal integration
- Environmental constraints
- Maintenance and operational limitations
- Delay and cancellations of strategic projects
- Infrastructure compliance
- Other: \_\_\_\_\_

**Mentimeter – 3 most important challenges**

 **Mentimeter**

## Slide 20

---

**MM0** @LINKS do you think the attendees will be more comfortable in speaking in Italian or English?

On one hand, the presentation is all in English, including the terms, and if it's in English I can help moderating (have some experience from other workshops).

On the other hand, no idea about the general English level of the participants.

Matias, Marcelo; 2025-10-14T09:18:14.671

# 3

## Cooperation and its benefits for the corridor



*Subquestion*

2. What **spatial scenarios** can be developed for the future of the corridor?

# Types of Cooperation

1. Stakeholder engagement and dialogue
2. Alignment of urban and regional planning
3. Expanded EU funding opportunities
4. Prioritisation of projects by national governments
5. Alignment in cross-border regulatory frameworks and border controls
6. Operational and technical interoperability



3. What **governance structures and mechanisms** are necessary for effectiveness across all policy levels?

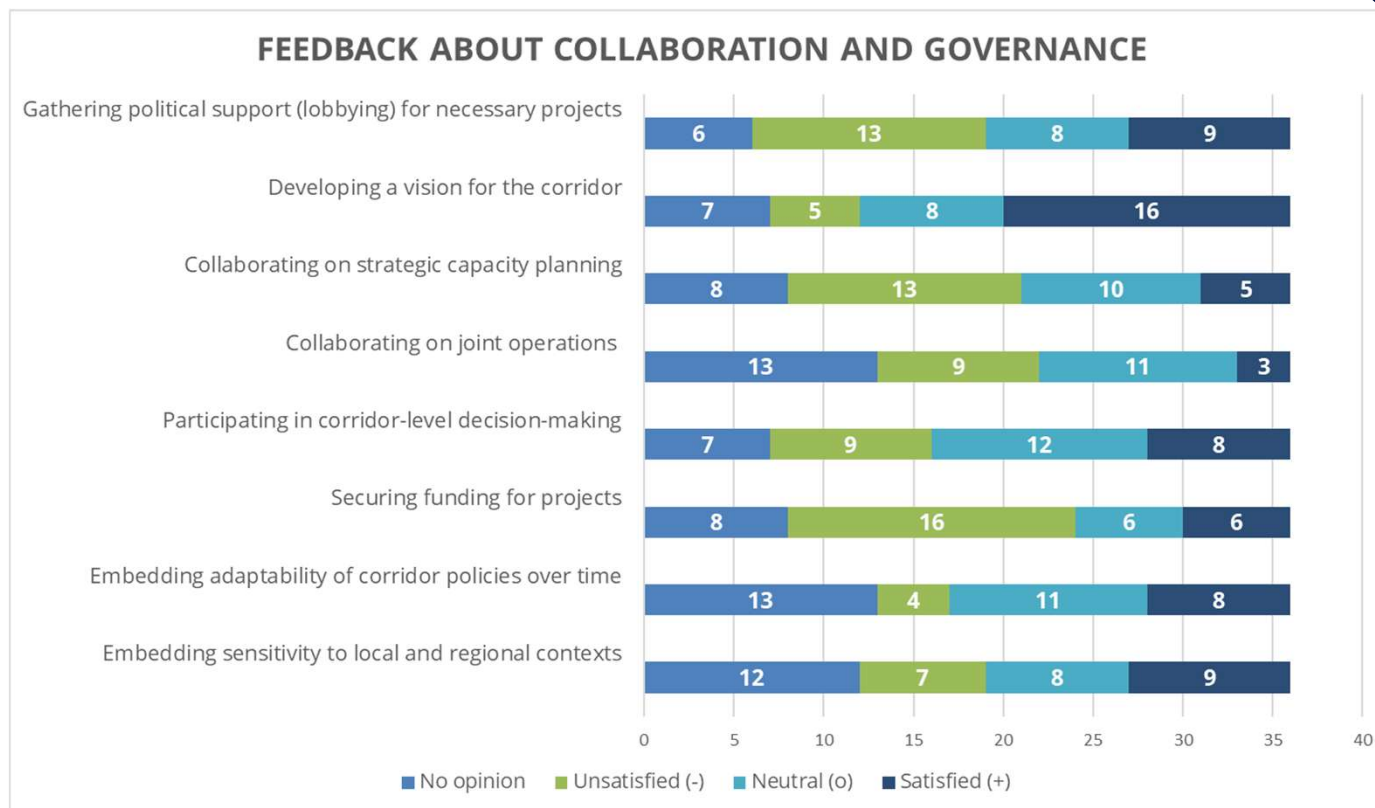
# Current governance of the corridor

- NSRM Corridor: Current governance Model
  - Coordinated by a European Coordinator (ETCs).
  - Corridor Fora & Working Groups: align EU, Member States, IMs, operators.
  - Focus: interoperability, capacity, sustainability.
- Role of DG MOVE
  - Sets policy & regulation (TEN-T, Green Deal, SSM Strategy).
  - Monitors & approves corridor work plans.
  - Manages funding (CEF, Multiannual Financial Framework).
  - Ensures cross-border coordination & compliance.

Subquestion

3. What **governance structures and mechanisms** are necessary for effectiveness across all policy levels?

# Stakeholder survey on governance



*Subquestion*

3. What **governance structures and mechanisms** are necessary for effectiveness across all policy levels?

## Follow up next steps

Final report February 2026

Invitation for the next meeting

**ESPON**



Co-funded by  
the European Union  
Interreg

espon.eu



# Thank you for your attention!

The consultants